

# MONTHLY MEMBERSHIP PROGRESS REPORT

LOCATION INDIA

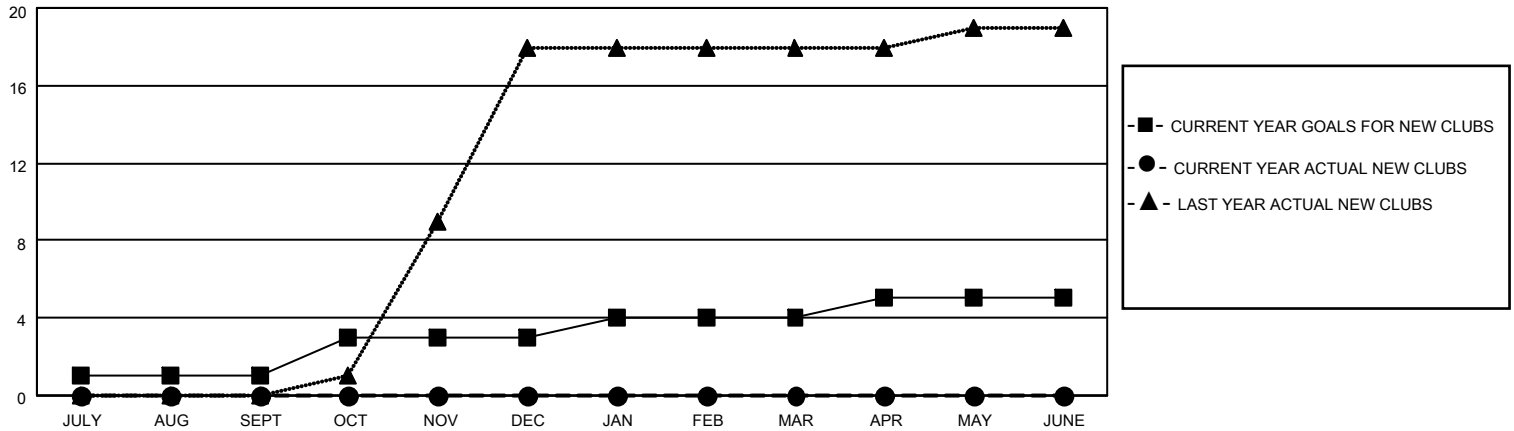
District 3231A1

Results as of: 4/30/2022

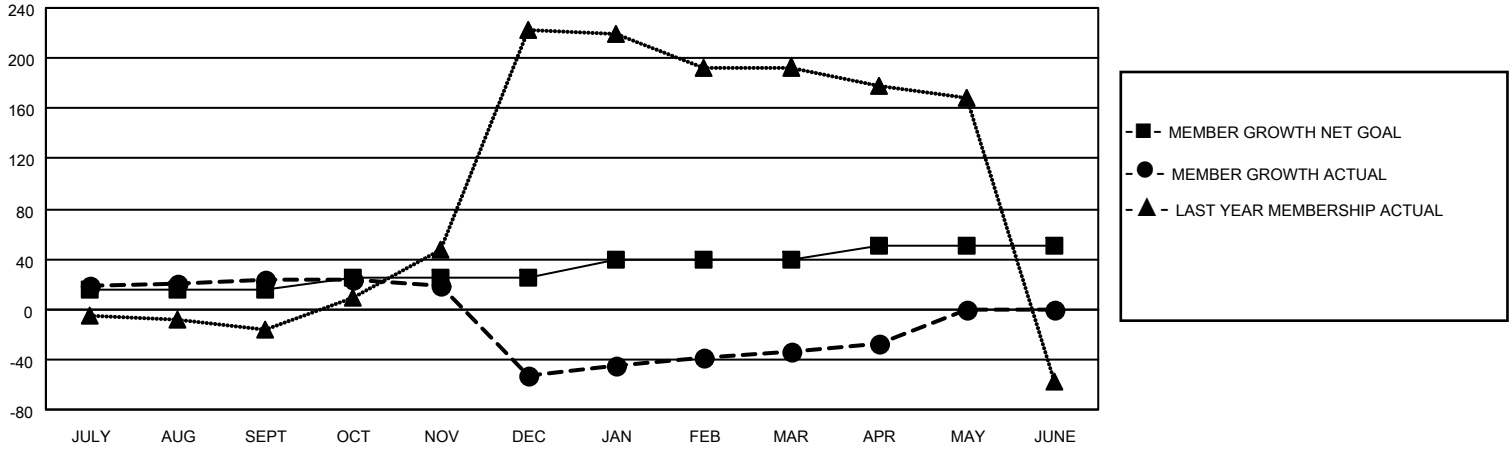
Clubs			
RESULTS FOR 2021-2022			
QUARTER	NEW CLUB GOAL	NEW CLUBS	DROPPED CLUBS
JULY/AUG/SEPT	1	0	0
OCT/NOV/DEC	2	0	1
JAN/FEB/MAR	1	0	0
APR/MAY/JUNE	1	0	0

Members			
RESULTS FOR 2021-2022			
QUARTER	MEMBER GROWTH NET GOAL	MEMBER GROWTH ACTUAL	DROPPED MEMBERS ACTUAL (including transfers)
JULY/AUG/SEPT	15	32	5
OCT/NOV/DEC	10	7	83
JAN/FEB/MAR	15	26	2
APR/MAY/JUNE	10	11	2

**GOALS AND ACTUAL NEW CLUBS CUMULATIVE**



**GOALS AND ACTUAL MEMBERS CUMULATIVE**



DROPPED CLUBS: 1	
<b>DROPPED MEMBERS</b>	
DECEASED	4
CLUB CANCELLED	3
OTHER	85
<b>TOTAL</b>	<b>92</b>

17 CLUBS OF 70 ADDED 1 OR MORE NEW MEMBERS

[CLICK HERE FOR CUMULATIVE MEMBERSHIP DATA](#)

<u>GENDER DISTRIBUTION</u>	
MALE	941 (61.62%)
FEMALE	586 (38.38%)
NON BINARY	0 (0.00%)
PREFER NOT TO ANSWER	0 (0.00%)
<b>TOTAL FAMILY UNIT MEMBERS</b>	<b>671</b>
<b>FAMILY MEMBERS PAYING HALF DUES</b>	<b>359</b>